



# Pitch.

Casual Events and Bookings





# The Modern Way to Play.




## Play

Even if you've never swung a club before, our built-in handicapping software levels the playing field—meaning the office pro can be humbled by a novice beginner. With a variety of fun and competitive golf games, there's something for everyone to enjoy.



## Drink

From Spicy Margaritas, Triple Bogey Negronis and Pi-NO Coladas we have a varied cocktail list from our new menu to suit all tastes. Alternatively, try our organic wines or selection of refreshing craft and draught beers.



## Eat

Feeling hungry? Enjoy food from our events menu in Canary Wharf and Soho, or a hearty Italian pizza from Pizza Pilgrims at our City venue.



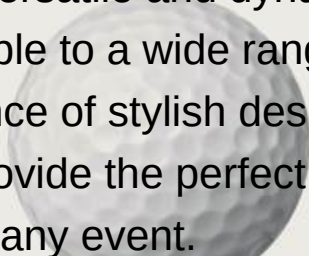
## Enjoy

Pitch's slick design and carefully curated soundtrack provide the perfect setting for your evening. Enjoy our lounges both before and after your booking at no extra charge.



## Unwind

Our spaces offer a versatile and dynamic environment, adaptable to a wide range of occasions. With a balance of stylish design and functional spaces, they provide the perfect backdrop to elevate any event.





# Three. London. Clubs.

## Pitch.Soho

Nestled down quiet Meard Street, our Soho Clubhouse is both a golfing sanctuary from the outside world and in the heart of the action. Spread over 8,000 sqft with nine versatile bays and a chic bar, it's a flexible events space offering so much more.

## Pitch.City

A stone's throw from Liverpool Street on Bishopsgate, there's no better venue in the City than our original clubhouse. With eight bays, a bar and mezzanine lounge this club has it all.

## Pitch.Wharf

Our new flagship club spans 14,500 sqft and is designed for unforgettable events. With eleven bays, three shuffleboard tables, a bar, and a spacious outdoor terrace, it's the perfect setting for corporate gatherings, private parties, and summer socials.

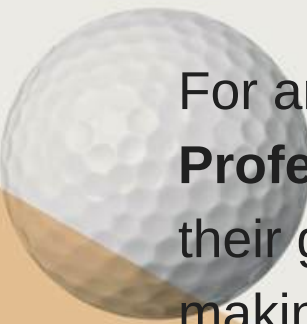




# Our Games

Experience the modern way to play golf with **virtual games** like Party Putt, Cannon Bowl, and Streets of Neon. Perfect for all skill levels, Trackman games offer challenges from precision tasks to fun showdowns like closest to the pin.

Elevate your event at Pitch with full or half-venue hire, offering activities like **shuffleboard**, **roulette**, **Nintendo Switch** on a 3m screen, and more.



For an added touch, enjoy expert coaching from our **PGA Professionals**—perfect for beginners or those looking to refine their game. Custom arcade games are also available on request, making it ideal for mixed-ability groups.





A wide-angle photograph of the Pitch Wharf interior. In the foreground, a long wooden shuffleboard table with a black frame is visible, featuring blue pucks and a red pusher. To the left, a staircase with a dark metal railing leads up. In the background, a bar area with a tiled counter and shelves of bottles is visible. The ceiling has exposed pipes and industrial-style lighting. The overall atmosphere is modern and industrial.

# Shuffleboard at Pitch Wharf

Alongside our interactive bays and vibrant social spaces, Pitch Wharf\* is levelling up with the addition of **three shuffleboard tables!**

This exciting new addition brings more ways to compete, connect, and unwind. Perfect for elevating your events, shuffleboard adds a unique blend of strategy and social play to any occasion.

\*only available at Canary Wharf





# Outdoor Terrace at Pitch Wharf

Our outdoor terrace and downstairs bar offer a fantastic space for enjoying drinks in a relaxed yet vibrant atmosphere, perfect for after-work gatherings or social occasions during the summer months.





Pitch.

# Private Area at Pitch Soho

The area includes an adaptable lounge area as well as 4 bays.  
This is the perfect option if you are looking for the extra privacy to  
entertain and host clients.





A photograph of a modern mezzanine lounge area. In the foreground, a woman with blonde hair, wearing a white shirt and a dark vest, sits on a dark grey tufted sofa, holding a glass of beer. To her right, another woman in a bright blue blazer sits in a grey armchair, looking towards a large screen. The screen displays a virtual golf course. In the background, three men are seated on another part of the mezzanine, also drinking beer. The area is enclosed by a dark metal railing with a wooden handrail. A small white table with a smartphone on it is next to the first woman. A larger glass table with more drinks and snacks is in front of the woman in the blue blazer. The lighting is warm and ambient, with blue curtains visible in the background.

# Mezzanine at Pitch City

A raised mezzanine overlooking the simulator bays with  
a bar and relaxed seating area



# Exclusive Venue Areas

## Canary Wharf

- Full venue hire - capacity 400 - From £20,000 + VAT
- Half-venue hire (Upstairs or Downstairs) - capacity 220 - From £9,000 + VAT
- Small area hire - capacity 60 - From £3,000 + VAT
- Shuffleboard area hire - capacity 200 (if using outdoor terrace) - From £2,000 + VAT

## Soho

- Full venue hire - capacity 200 - From £6,000.00 + VAT
- Clubhouse - capacity 130 - From £4,000.00 + VAT
- Private area hire - capacity 50 - From £2,000.00 + VAT

## City

- Upstairs venue hire - capacity 60 - From £3,000.00 + VAT





# Food & Drink



## Pitch Menu

Available exclusively at Canary Wharf and Soho, featuring a range of dishes.



## Cocktails

Served at all of our Clubhouses, try our delicious cocktail menu.



## Pizza

A great food option at our City clubhouse, providing the perfect course side snack.



# Canary Events Packages

Perfect for those regular team rewards or the more budget conscious. Our events packages cater for all.  
Prices are inclusive of VAT

○ Off-Peak  
● Peak



## PAR

Two hours of games  
Two house drinks  
No food  
Reservable area

**£41pp - £45pp**



## BIRDIE

Two hours of games  
Two house drinks  
One food dish  
Reservable area

**£51pp - £55pp**



## EAGLE

Two hours of games  
Two premium drinks  
Two food dishes  
Reservable area

**£63pp - £67pp**



## ALBATROSS

Three hours of games  
Three premium drinks  
Three food dishes  
Reservable area

**£91pp - £95pp**



## ACE

Four hours of games  
Four premium drinks  
Three food dishes  
Reservable area

**£106pp - £110pp**

\*two prices show booking during Off-Peak/Peak times (Wednesday & Thursday)



# Soho Events Packages

Perfect for those regular team rewards or the more budget conscious. Our events packages cater for all.  
Prices are inclusive of VAT

○ Off-Peak  
● Peak



## PAR

Two hours of games  
Two house drinks  
No food  
Reservable area

£41pp - £45pp



## BIRDIE

Two hours of games  
Two house drinks  
One food dish  
Reservable area

£51pp - £55pp



## EAGLE

Two hours of games  
Two house drinks  
Two food dishes  
Reservable area

£63pp - £67pp



## ALBATROSS

Three hours of games  
Three premium drinks  
Three food dishes  
Reservable area

£91pp - £95pp



## ACE

Four hours of games  
Four premium drinks  
Three food dishes  
Reservable area

£106pp - £110pp



# City Events Packages

Perfect for those regular team rewards or the more budget conscious. Our events packages cater for all.  
Prices are inclusive of VAT

☐ Off-Peak  
☒ Peak



## PAR

Two hours of games  
Two house drinks  
No food  
Reservable area  
Use of mezzanine

£41pp - £45pp



## BIRDIE

Two hours of games  
Two house drinks  
Half pizza  
Reservable area  
Use of mezzanine

£51pp - £55pp



## EAGLE

Two hours of games  
Two house drinks  
Whole pizza  
Reservable area  
Use of mezzanine

£63pp - £67pp



## ALBATROSS

Three hours of games  
Three premium drinks  
Whole pizza  
Reservable area  
Use of mezzanine

£91pp - £95pp



## ACE

Four hours of games  
Four premium drinks  
Whole pizza & nibbles  
Reservable area  
Use of mezzanine

£106pp - £110pp



# Included Drinks

Perfect for those regular team rewards or the more budget conscious. Our events packages cater for all.  
Prices are inclusive of VAT



## PAR

Bottled Beers  
Single House Spirits  
House Wines 125ml  
Soft Drinks  
Tea & Coffee



## BIRDIE

Bottled Beers  
Ciders  
Single House Spirits  
House Wines 125ml  
Soft Drinks  
Tea & Coffee



## EAGLE

Pints of Beer  
Bottled Beers  
Ciders  
Double House Spirits  
House Wines 175ml  
Soft Drinks  
Tea & Coffee



## ALBATROSS

Pints of Beer  
Bottled Beers  
Ciders  
Double Premium Spirits  
House Wines 175ml  
House Cocktails  
Prosecco  
Soft Drinks  
Tea & Coffee



## ACE

Pints of Beer  
Bottled Beers  
Ciders  
Double Premium Spirits  
House Wines 250ml  
House Cocktails  
Prosecco  
Soft Drinks  
Tea & Coffee



# Pitch.Events

## Additional Upgrades

Bubbles on arrival

£10 pp

Cocktail list access

£12 pp

DJ hire for event

£150 ph

PGA Pro for event assistance

From £150 ph

Additional dish per person

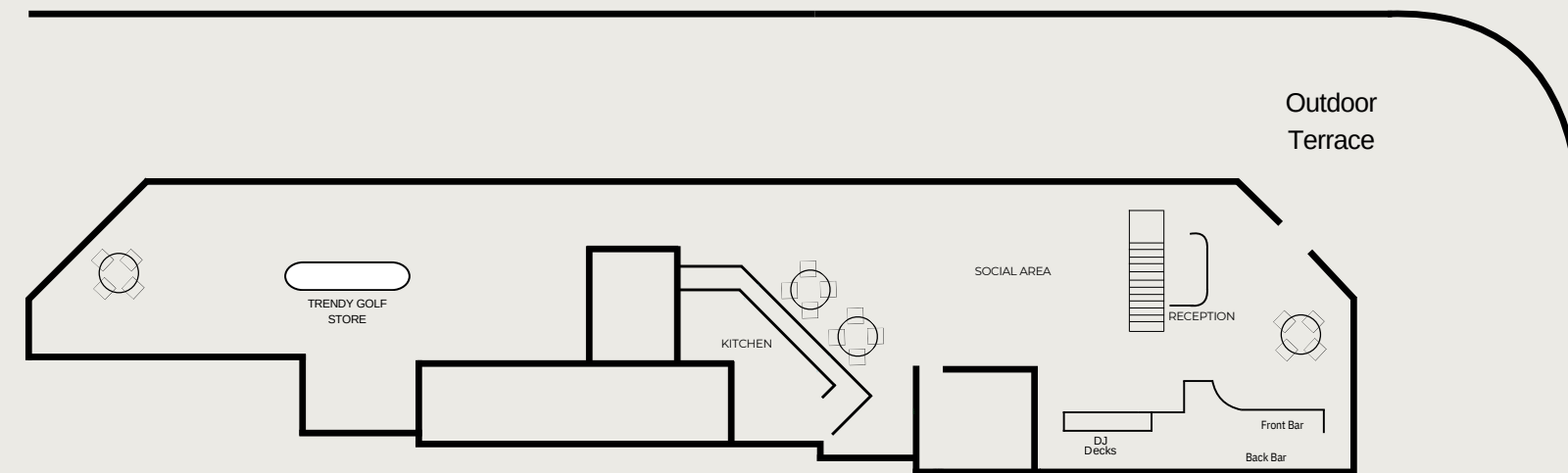
£9 pp



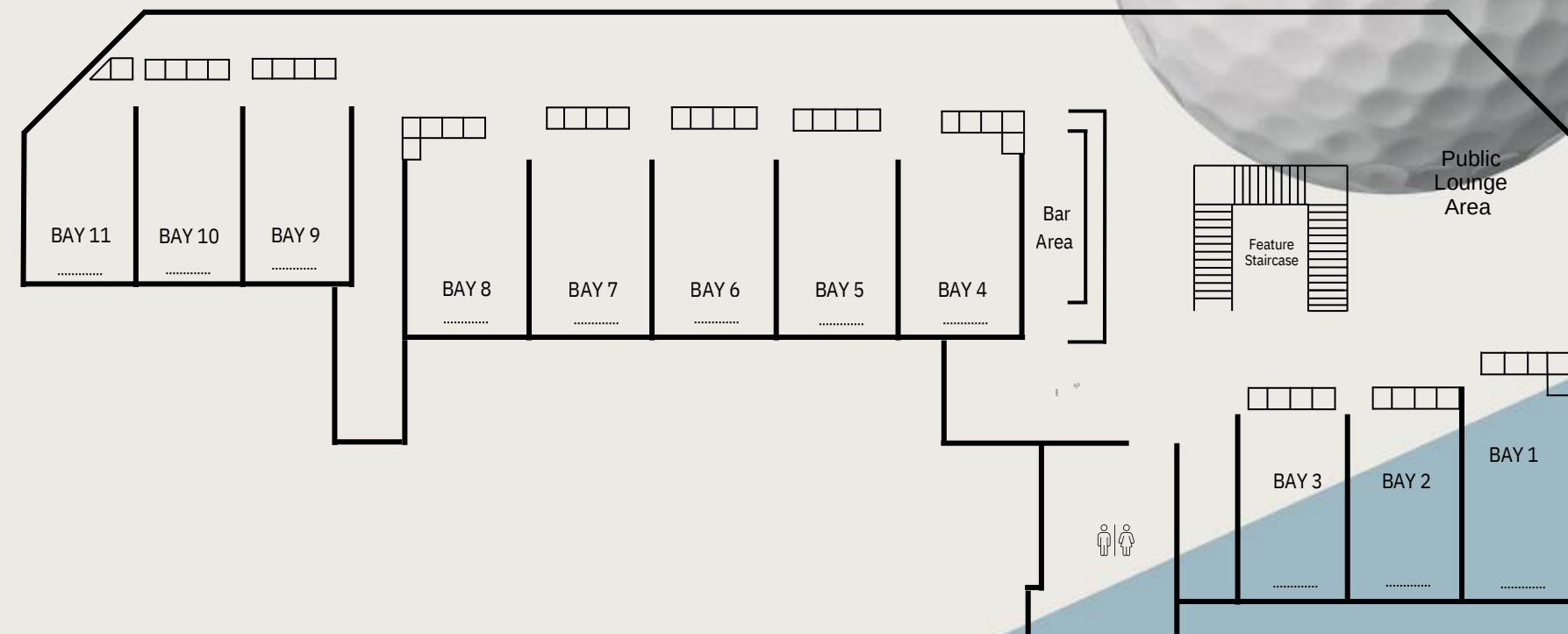


# Canary Wharf Floorplan

## Ground Floor



## First Floor

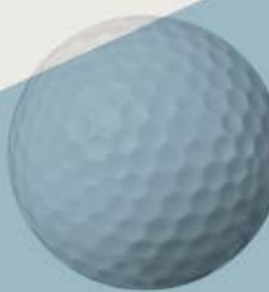


Covering 14,500 square feet, this state-of-the-art space includes:

- Eleven Trackman-powered bays
- An exclusive members' area
- Bar and food menu
- A Trendy Golf concept store
- Riverside terrace with seating
- Three Shuffleboards

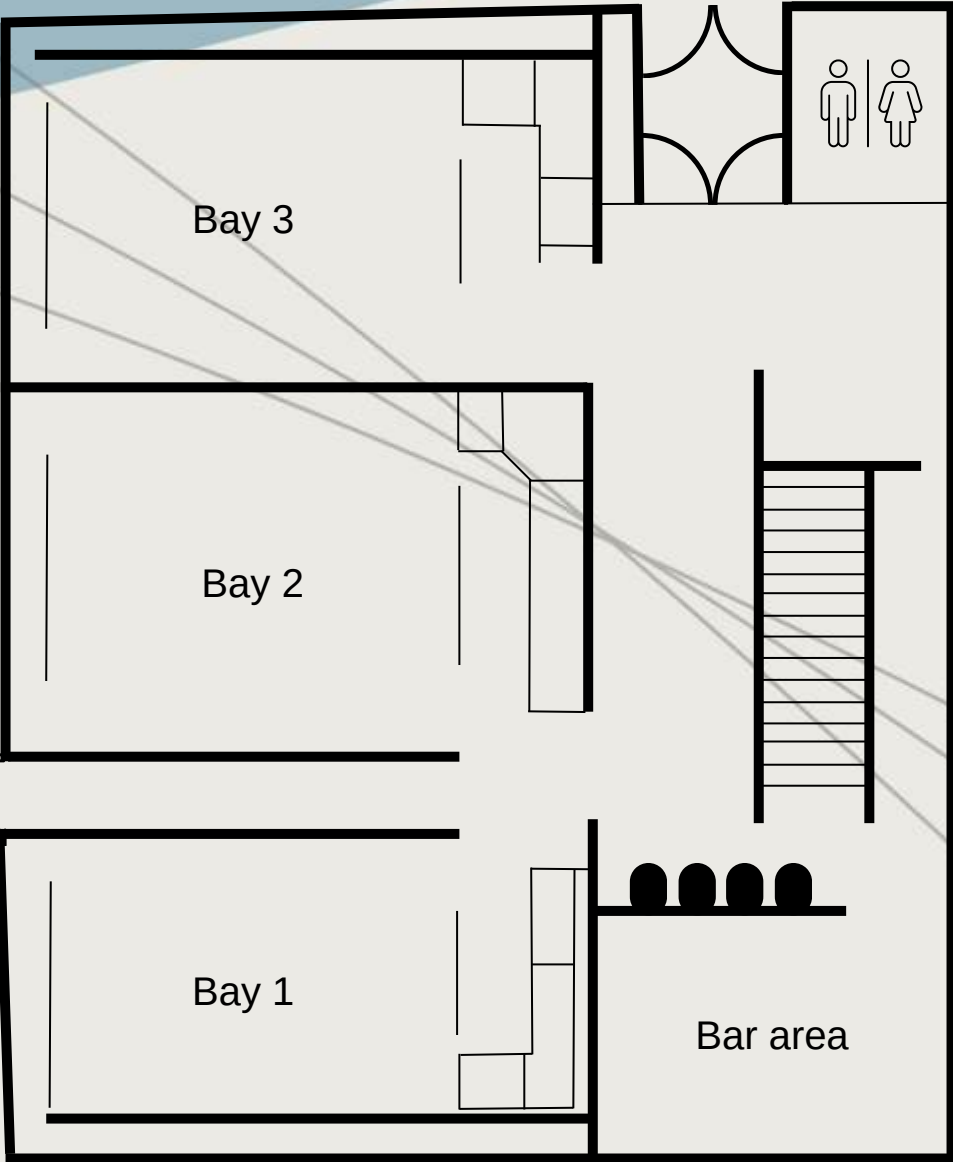


# Soho Floorplan

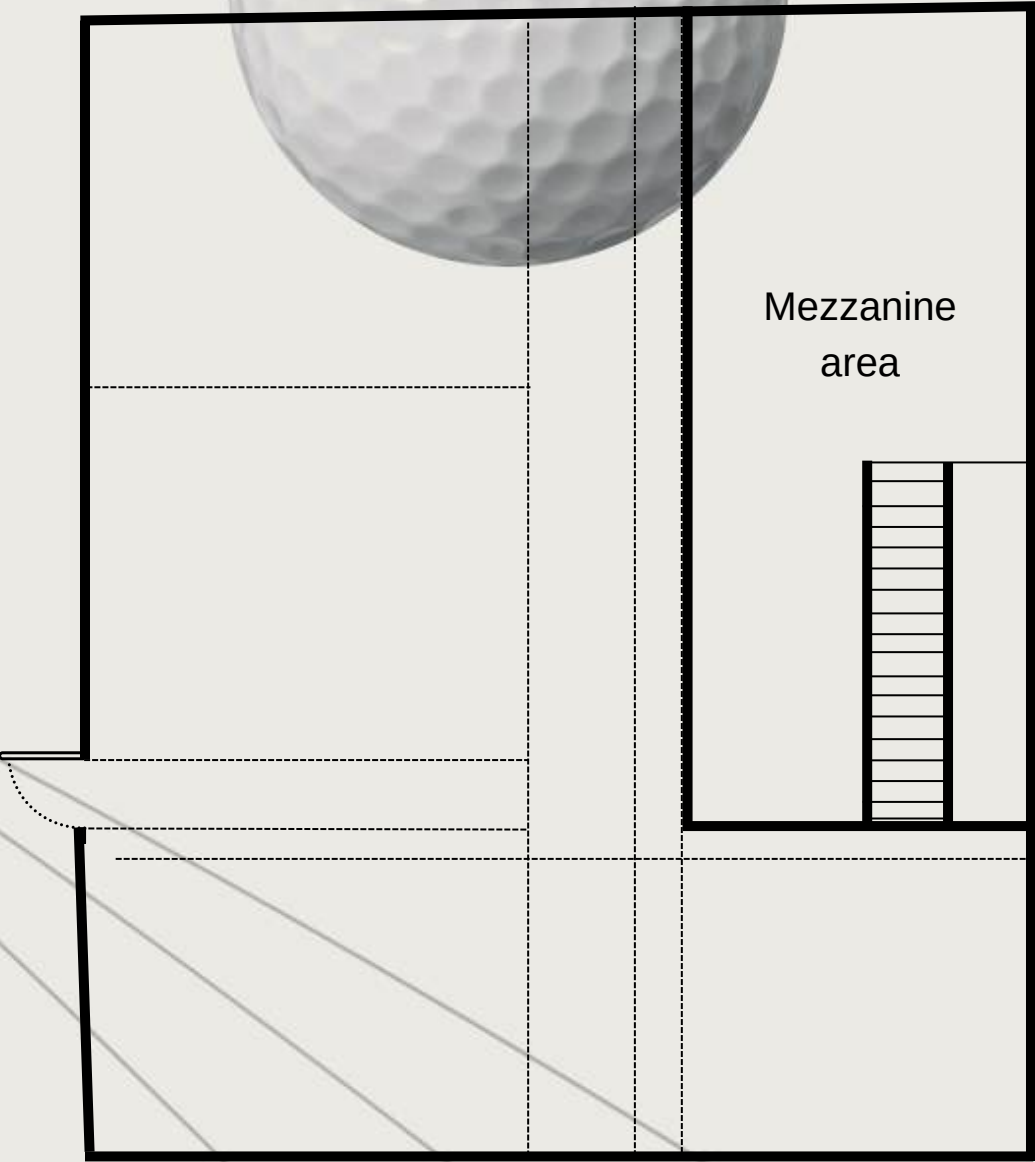




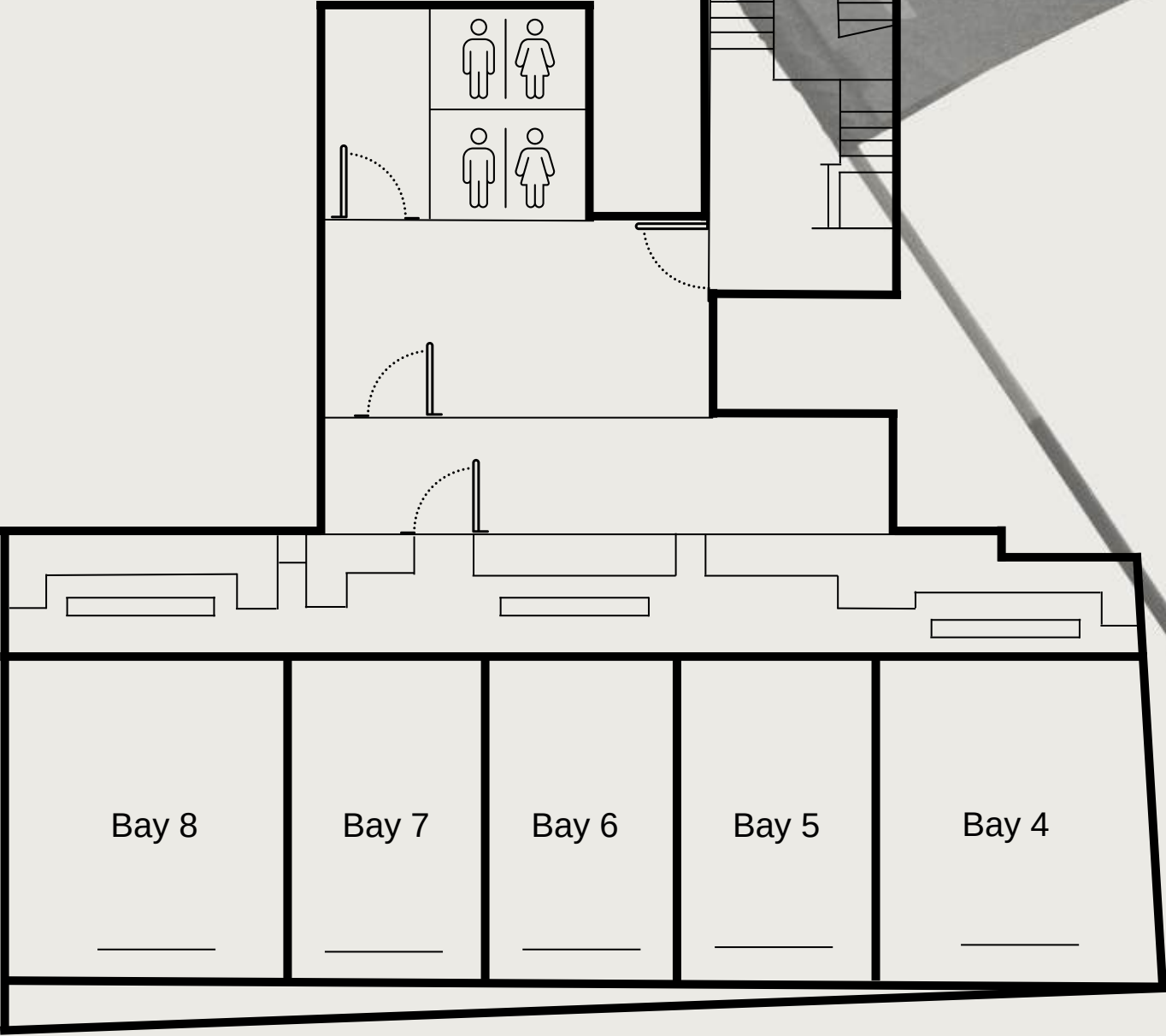
# City Floorplan



Ground Floor



Upper Floor



Lower Floor



A photograph of three men sitting on a light-colored sofa in a bar or lounge setting. The man on the left is wearing a white polo shirt and has a tattoo on his left arm; he is holding a green beer bottle. The man in the middle is wearing a black t-shirt and light-colored cargo pants, holding a glass of Guinness. The man on the right is wearing a grey hoodie. They are all smiling and looking towards the right. In the background, there is a bar counter and a television screen.

“Do I play golf - No.  
Would I go back - YES!”

5\* Google Review

“Pitch brings a heavy  
dose of cool”

Square Mile Magazine

“Service was  
exceptional...great  
atmosphere with the DJ”

5\* Google Review

“ From start to finish the  
experience with Pitch was  
fantastic. The experience  
of golf itself was great,  
even for beginners, with  
modern facilities & a  
relaxed environment.”

5\* Google Review

“ Great Venue, staff and  
Tech. Love getting down  
there any time I can!”

5\* Google Review





Please contact:  
[events@pitchldn.co.uk](mailto:events@pitchldn.co.uk)  
020 7628 9424